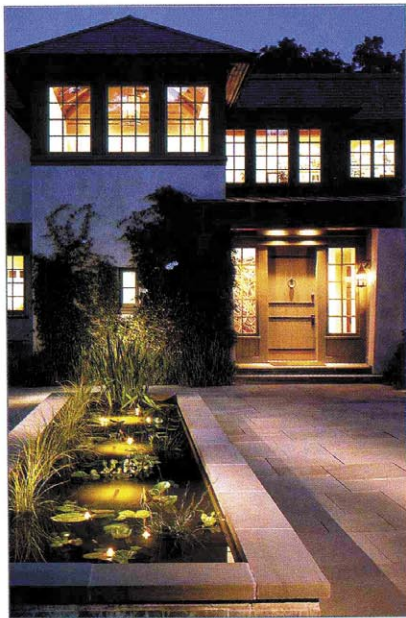


2002 Custom Home Design Awards

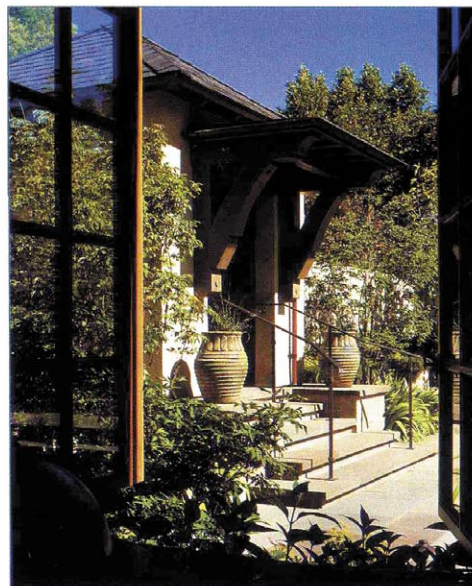
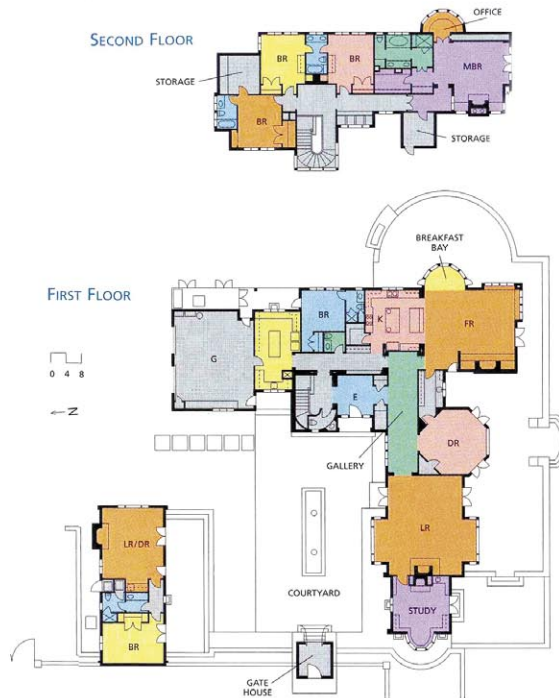
Grand Award

Custom Home More Than 5,000 Square Feet
 Woodside, Calif., Residence



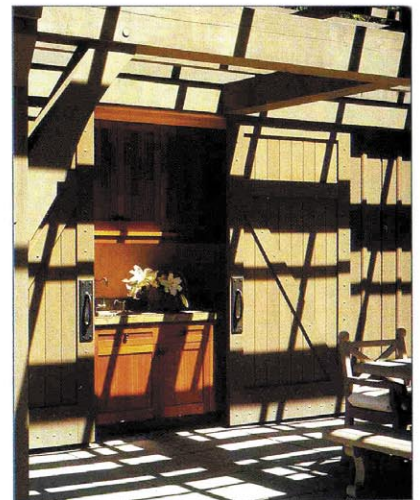
Wooded, multi-acre lots on the San Francisco peninsula are so rare, and come at such rarified prices, that over-building one is virtually impossible. Construction budgets have gone stratospheric just keeping pace with land values. “We do primarily unaffordable housing,” jokes architect Greg Warner. All kidding aside, however, such plum projects are a true test of an architect’s craft. With a prime site and a budget to match, the results had better be outstanding. This new custom home, which marries the Arts and Crafts style with the outdoor living of a classic California ranch, delivers the goods.

Working with landscape architect Ron Lutsko,



Warner located the project’s four buildings—gate house, guesthouse, main house, and pool cabana—to make the most of their lush surroundings. Occupying one corner of the lot, the compound acts as a gateway to the site, three gently sloping acres that border a creek. A garden wall and the buildings themselves define a number of discrete outdoor living spaces, “which are enormously beneficial here in California,” Warner says. “It feels much less suburban on account of that.”

For the structures themselves, Warner drew inspiration from 19th-century English architect C.F.A. Voysey and from flora found on the site. “The exterior materials were inspired by one particular oak tree on the property,” Warner says. The plaster walls, heavy timber roof framing and lintels, and copper roofing at



bay windows reflect this subtle, earthy palette. The massing of the main building—an “L” shape deeply interlocked with the outdoors—delivers this substantial house as a series of invitingly intimate experiences. “It’s not a show-me house,” Warner says. “It’s revealed incrementally.”

The judges admired the architect’s ability to “shape spaces on the site” and establish “vignette-like views of the house.” As difficult as it is to do justice to this caliber of site, they noted, “This house does it well.”—B.D.S.

Entrant/Architect: Walker Warner Architects, San Francisco; Builder: Forde Mazzola Associates, San Francisco; Landscape architect: Lutsko Associates, San Francisco; Living space: 6,700 square feet; Site size: 3 acres; Construction cost: Withheld; Photographer: John Sutton. ■ For product information see page 124.